



## Installing All Tremron Hatch Patterns

As standard AutoCAD patterns when using the BHATCH command.

### STEP BY STEP:

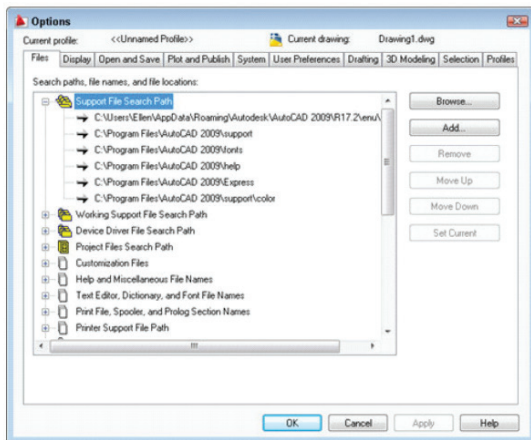
#### STEP 1:

Locate your existing two standard AutoCAD hatch files, acad.pat and acadiso.pat.

#### With AutoCad Open:

To find your support folder path, open the Options dialog box by right-clicking in the drawing or command line area with no objects selected, and choose Options.

Click the Files tab. Then click the plus sign next to the first item, Support File Search Path, to expand the list.



The top item is your default location. Your menu, font, line type, and hatch pattern files are there by default.

#### EXAMPLE: AUTOCAD 2018 IN WINDOWS 10

C:\USERS\(\YOU'RE USER NAME)\APPDATA\ROAMING\AUTODESK\AUTOCAD2018\R22.0\ENU\SUPPORT



**STEP 2:**

Open the acad.pat file and acadiso.pat with Notepad, copy and paste the contents of each pattern .Pat file into each of those two files.

Note, there must be a carriage return (enter) at the end of the last line.

If done correctly, you will then see the Tremron hatch patterns alongside the standard AutoCAD patterns when using the BHATCH command.

**STEP 3:**

Save the acad.pat file and acadiso.pat. Make sure Notepad does not add the extension ".txt" to the file. You will then see the new hatch patterns alongside the standard AutoCAD patterns in the "Other Predefined" tab when using the BHATCH command.

**You are now ready to use these new hatch patterns brought to you by Tremron Group!**