



# 46" Square Fire Pit • 3-Course Design • GAS

### General Note:

In consideration of freeze / thaw issues during the cold weather season it is recommended that this outdoor Square Fire Pit element be protected from rain, snow and ice as necessary.

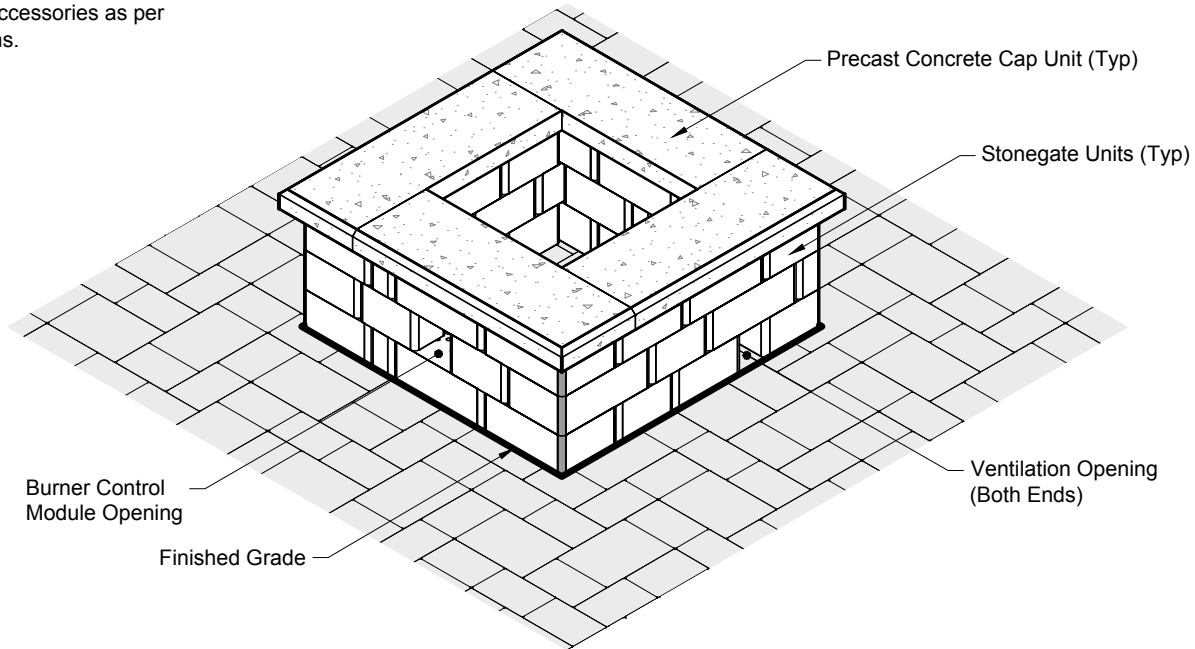
### Square Fire Pit Quantity Totals:

Units quantities as follows:

- Large Unit "A" - 16"/14" = 14 Units
- Medium Unit "B" - 12"/10" = 13 Units
- Small Unit "C" - 6"/4" = 13 Units
- Precast Concrete Cap Units = 4

### Accessories Note:

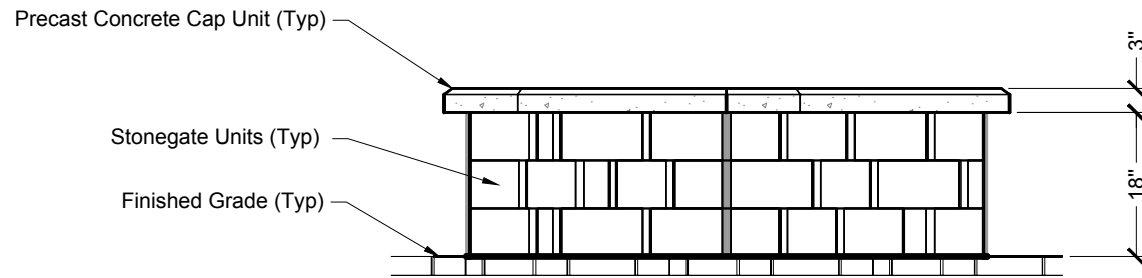
Install vents, burner assembly and accessories as per manufacturers installation instructions.



Square Fire Pit Isometric



# 46" Square Fire Pit • 3-Course Design • GAS



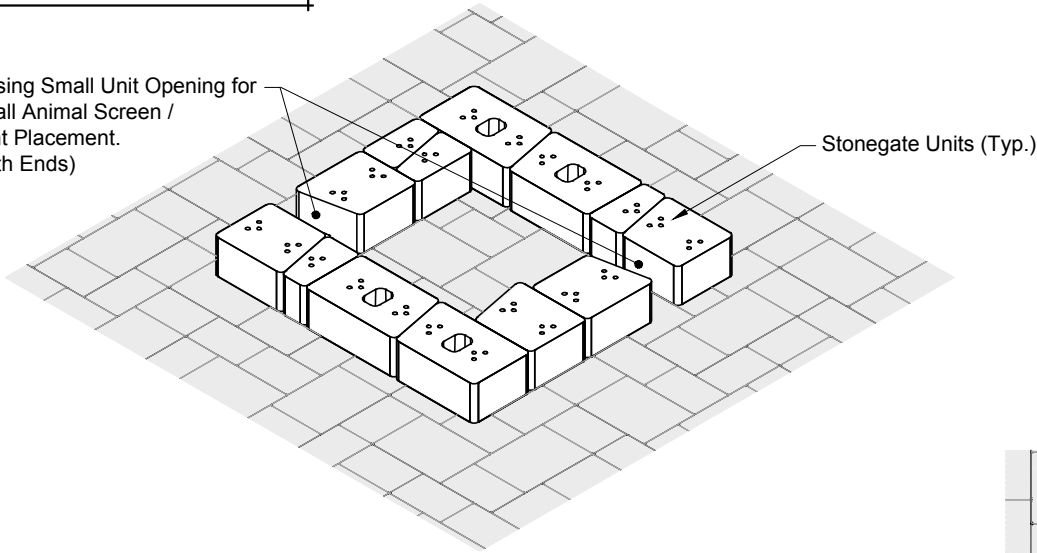
Square Fire Pit Front Rotated Isometric



# 46" Square Fire Pit • 3-Course Design • GAS

1st Course Isometric

Missing Small Unit Opening for Small Animal Screen / Vent Placement. (Both Ends)



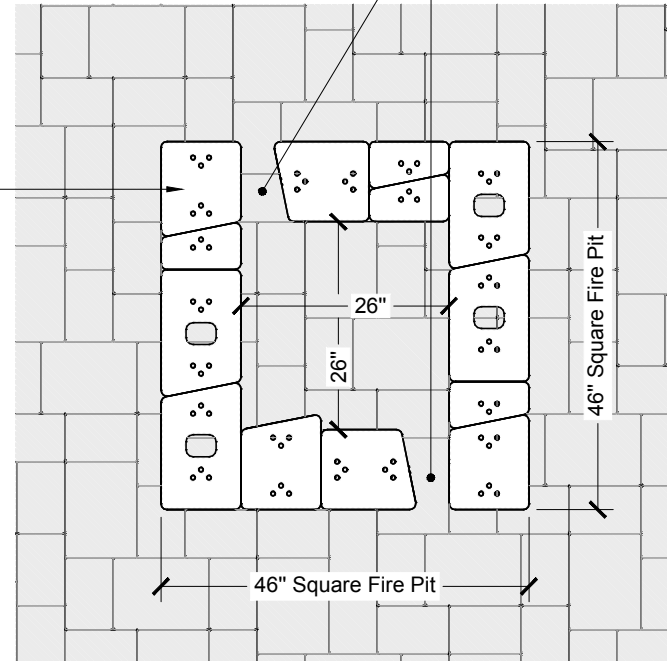
**Ventilation Note:**

The burner assembly manufacturer may recommend ventilation of the interior fire pit area from a potential gas build up. Two blocks from the 1st course have been removed for at grade ventilation. Small animal screen inserts have been supplied to place in the removed block open areas.

1st Course Plan

Stonegate Units (Typ.)

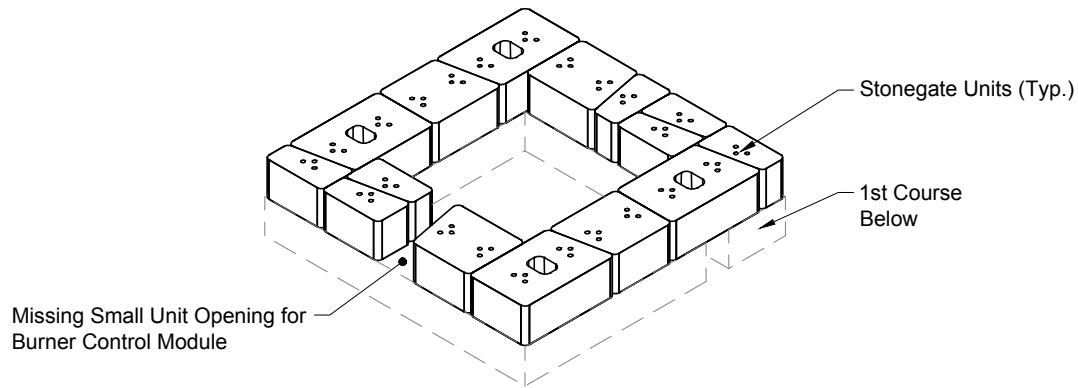
Missing Small Unit Opening for Small Animal Screen / Vent Placement. (Both Ends)





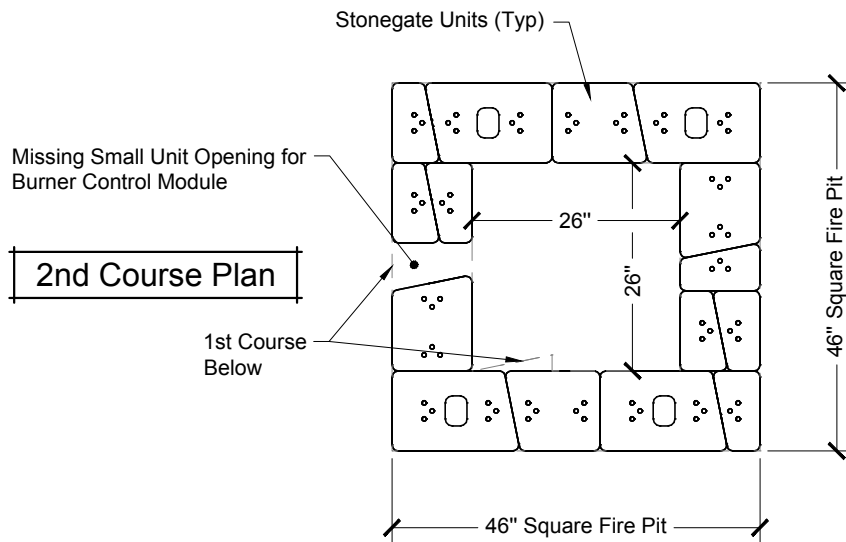
# 46" Square Fire Pit • 3-Course Design • GAS

2nd Course Isometric



**Burner Control Note:**

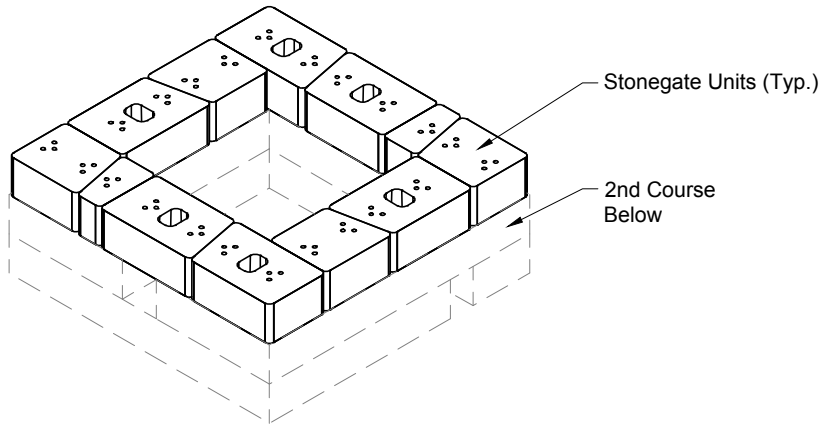
Remove one block from the 2nd course, as designated, for installation of the burner control module.



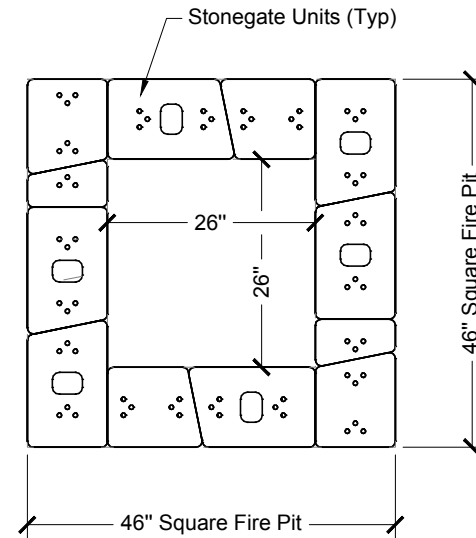


# 46" Square Fire Pit • 3-Course Design • GAS

3rd Course Isometric



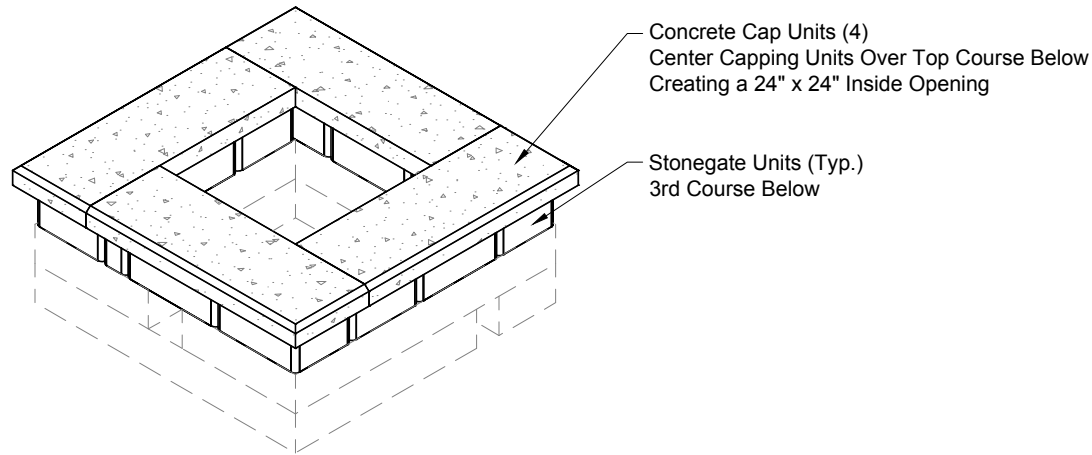
3rd Course Plan





# 46" Square Fire Pit • 3-Course Design • GAS

3rd Course Capping Isometric



Concrete Cap Units (4)  
Center Capping Units Over Top Course Below  
Creating a 24" x 24" Inside Opening

Stonegate Units (Typ.)  
3rd Course Below

**Concrete Cap Unit Note:**

This square fire pit design uses precast concrete cap units. Unit dimensions are as follows:

Concrete Cap Unit:

- Cap Unit is 13" in depth / 37" in length / 3" in height

Install and secure concrete cap units with adhesive as per manufacturers installation instructions.

Concrete Cap Units (4) - Center Capping Units  
Over Top Course Below Creating a 24" x 24"  
Inside Opening

3rd Course Capping Plan

Stonegate Units (Typ.)  
3rd Course Below

